

INSTALLATION GUIDE:

THE CRUISEMASTER DO35



Required Tools:

- Adjustable Torque Wrench
- Ratchet (to fit an 18mm socket)
- 19mm Wrench
- 18mm Socket

Required Parts:

- CruiseMaster Hitch
- 4X Bolts (size: M12)
- 4X Washers
- 4X Nuts



Procedure:

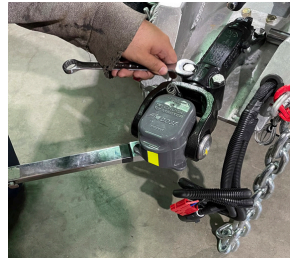
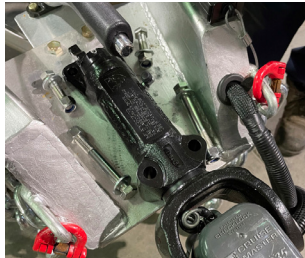
STEP 1:

Clean the mounting surface on the tongue where the hitch will be installed. Align CruiseMaster DO35 mounting holes on the trailer tongue.



STEP 2:

Using the 18mm socket and ratchet with a 19mm wrench, tighten the mounting bolts on the hitch. Take care to hold the nut from the bottom while tightening the top bolt to prevent the nut from rotating, making it difficult to tighten the bolt.



STEP 3:

Ensure the shorter bolts are installed in the holes closest to the handbrake, while the longer bolts are installed towards the tip of the hitch.



STEP 4:

Set the torque wrench to 90Nm (66lbs.ft) for M12 Bolts.
Once torque wrench is set, tighten mounting bolts to appropriate specifications.

